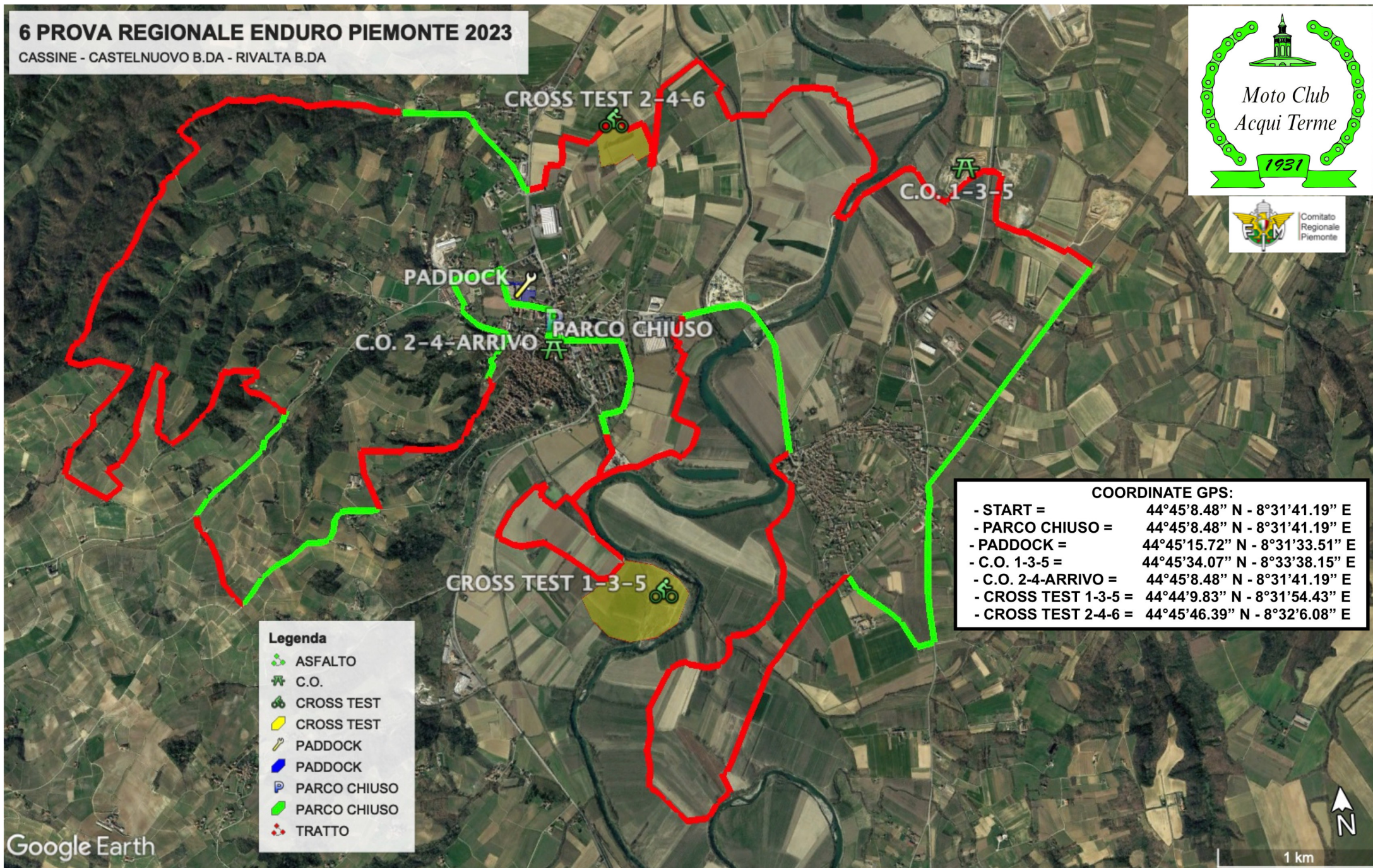


6 PROVA REGIONALE ENDURO PIEMONTE 2023

CASSINE - CASTELNUOVO B.DA - RIVALTA B.DA



- Legenda**
- ASFALTO
 - C.O.
 - CROSS TEST
 - CROSS TEST
 - PADDOCK
 - PADDOCK
 - PARCO CHIUSO
 - PARCO CHIUSO
 - TRATTO

COORDINATE GPS:	
- START =	44°45'8.48" N - 8°31'41.19" E
- PARCO CHIUSO =	44°45'8.48" N - 8°31'41.19" E
- PADDOCK =	44°45'15.72" N - 8°31'33.51" E
- C.O. 1-3-5 =	44°45'34.07" N - 8°33'38.15" E
- C.O. 2-4-ARRIVO =	44°45'8.48" N - 8°31'41.19" E
- CROSS TEST 1-3-5 =	44°44'9.83" N - 8°31'54.43" E
- CROSS TEST 2-4-6 =	44°45'46.39" N - 8°32'6.08" E

